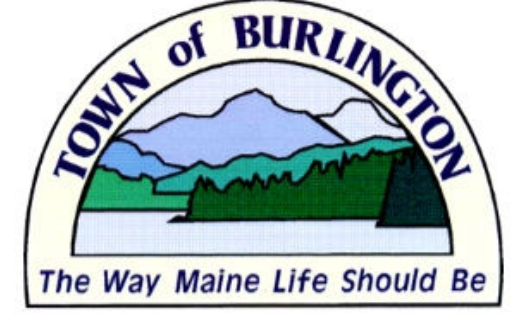


PROPERTY MAPS  
**Tax Map 2**  
**BURLINGTON**  
 Penobscot County, ME

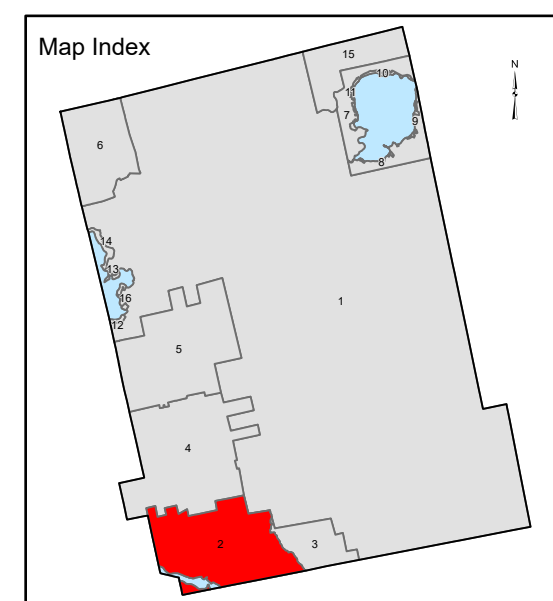
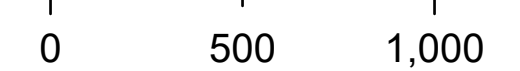


**LEGEND**

- PROPERTY LINE
- PUBLIC RIGHT-OF-WAY
- PRIVATE RIGHT-OF-WAY
- HISTORIC/SUBDIVISION LINE
- EASEMENT or ROW
- PARCEL HOOK
- 2-1** PARCEL ID NUMBER
- 150'** SURVEY DIMENSION (FEET)
- 1** SURVEY LOT NUMBER
- 1.25 AC** ASSESSED ACREAGE
- HYDROLOGY

The information on this map is for assessment purposes only, is not a legal survey, and is not intended to be used for conveyance.

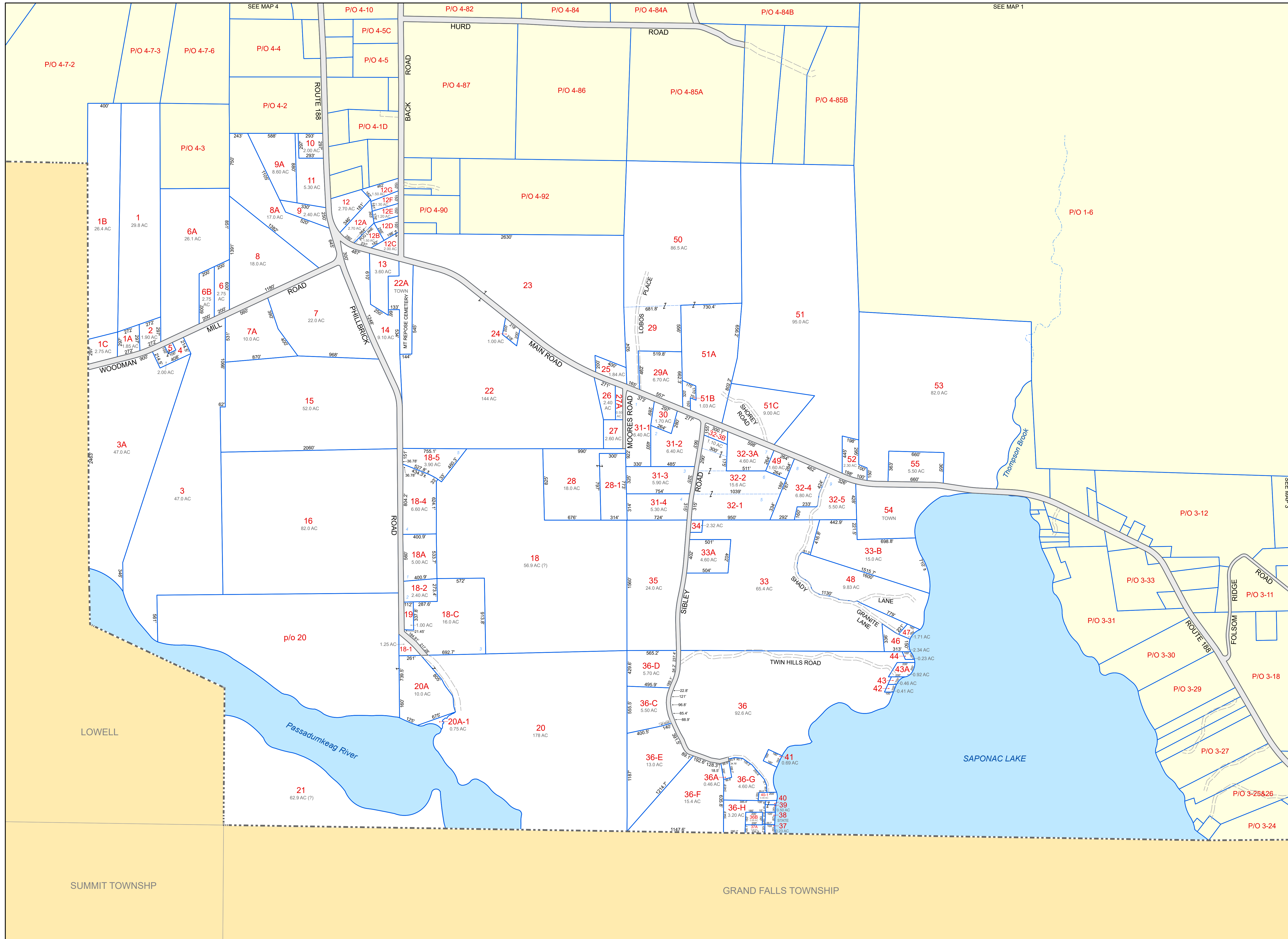
SCALE: 1 in = 500 ft



Original map prepared by J. W. Sewall Co. and revised by Elgin H. Turner & Stanley D. Turner. Map updated by LatLong Logic, LLC with RCS Assessment Services

Assessment date: April 1, 2024  
 Print date: 10/07/2024

Burlington Assessor's Office  
 1523 Long Ridge Road  
 Burlington, Maine 04417  
 (207) 732-3985



LOWELL

SUMMIT TOWNSHIP

GRAND FALLS TOWNSHIP

SEE MAP 4

SEE MAP 1

SEE MAP 3